

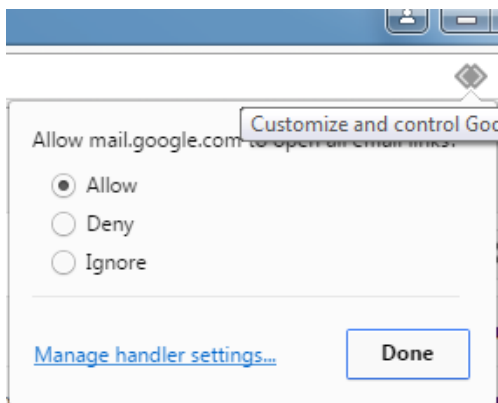
## Setting Gmail as the Default Mail Handler

### Chrome

1. Log into Gmail.
2. Click the linked diamonds icon at the end of the address bar.

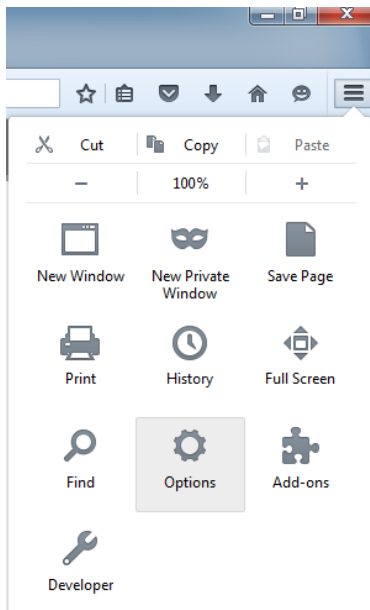


3. Click *Allow* and *Done*.

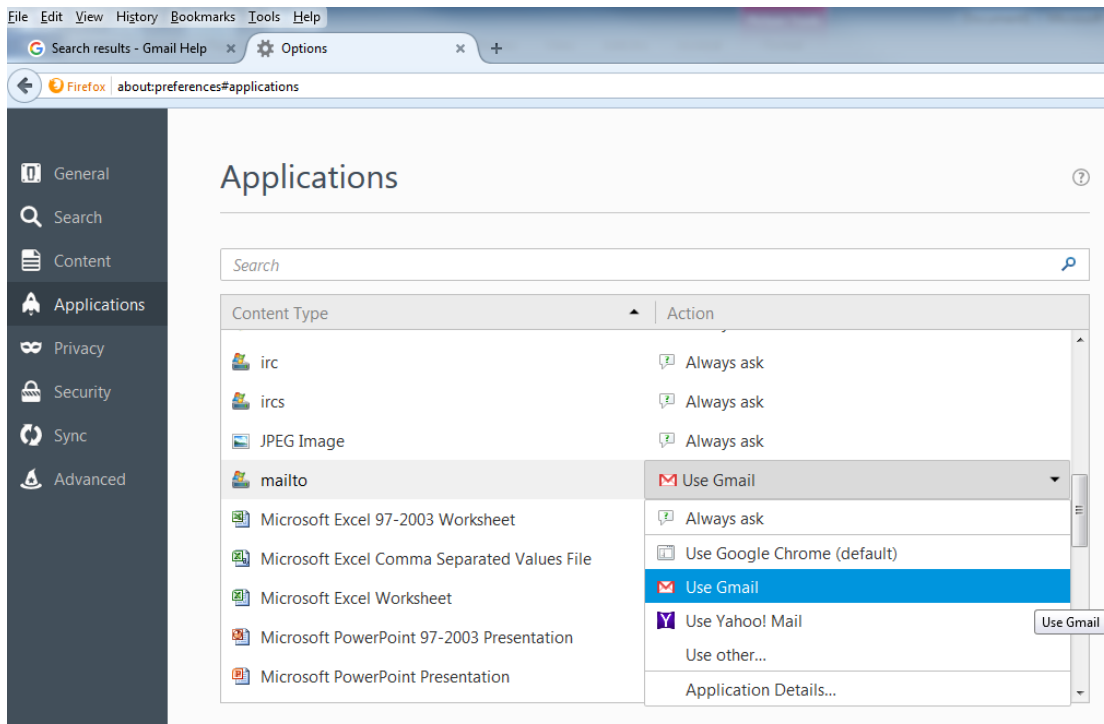


### Firefox

1. Click the menu button at the top right corner and select *Options*.



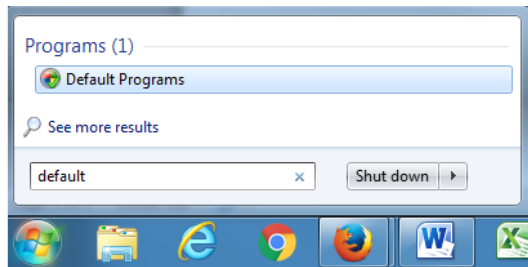
2. Select *Applications*. Find the entry for *mailto*, and select *Use Gmail* from the drop-down menu.



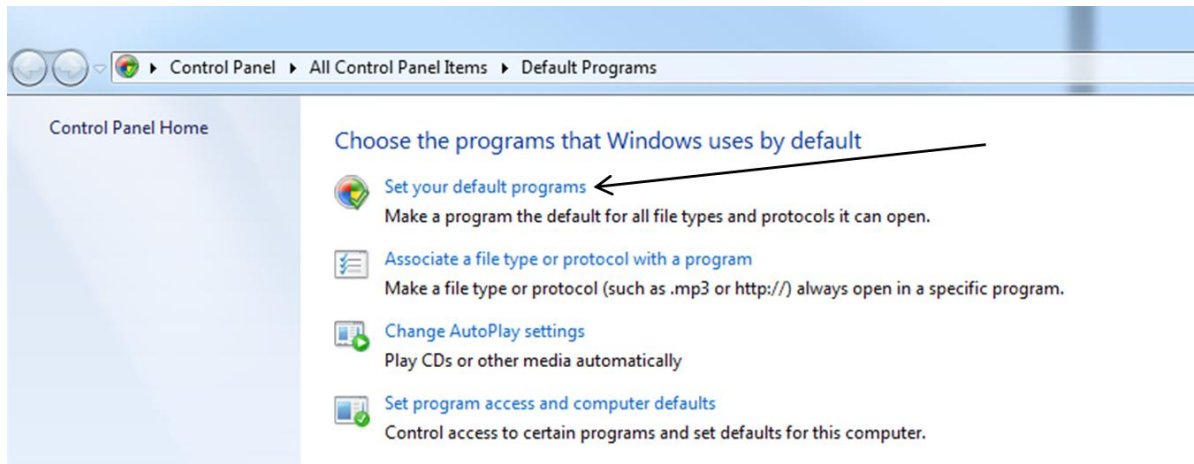
## Internet Explorer

Installing Google Toolbar will allow you to select Gmail as your default mail client. If you do not care to install a toolbar, the following method will redirect mail links to Gmail in Google Chrome.

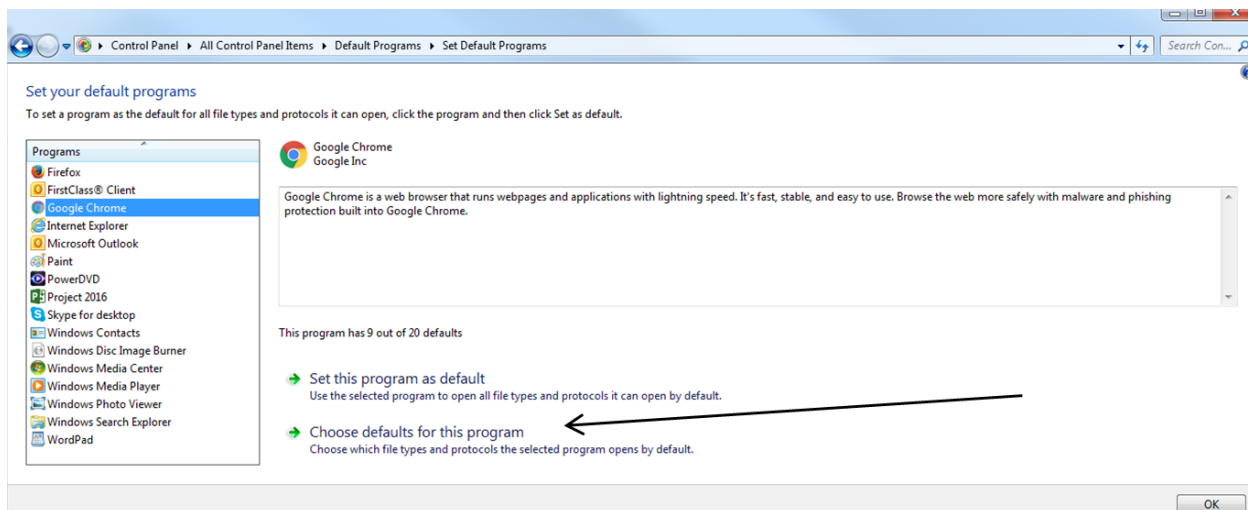
1. Open Chrome and follow the steps listed above for the Chrome browser.
2. Click the *Start* button and type *default*. Select *Default Programs*.



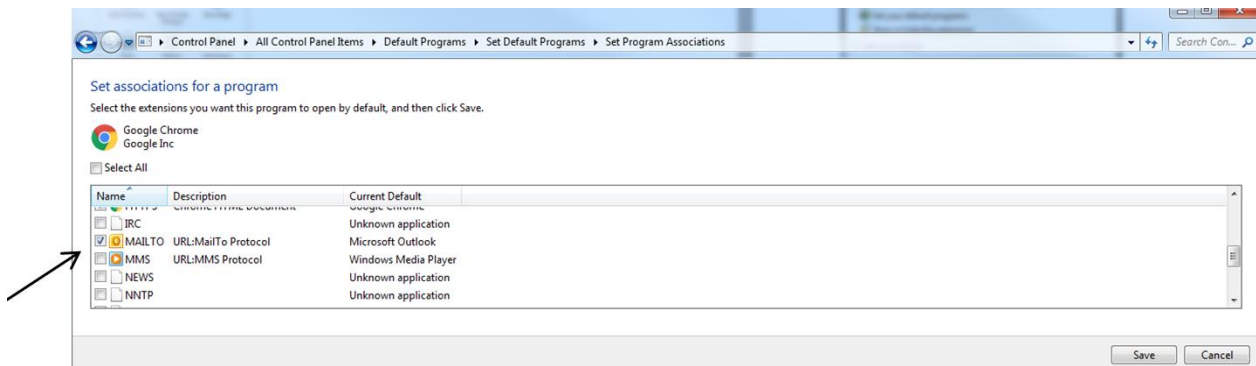
3. Click the link to *Set your default programs*.



4. Click *Google Chrome* and select *Choose defaults for this program*.



5. Check the box next to *MAILTO*, and click *Save*. Do not change any other settings.



## **Safari**

Safari requires the use of an extension. DSISD is not currently supporting the third party extensions available for *mailto*.